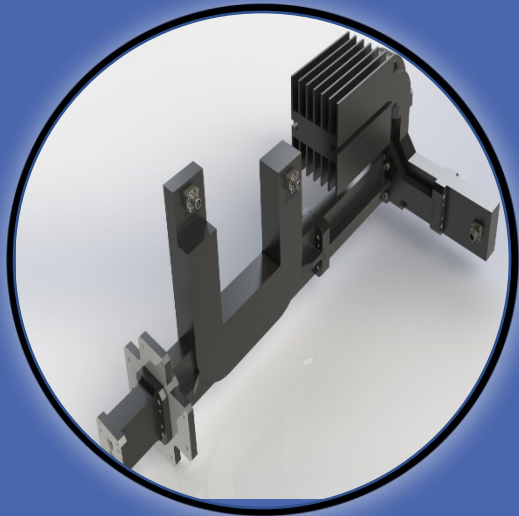


WRD500 2-Way Combining System Assembly



Description

The WRD500 Power Combining Assembly features a 2-way combiner seamlessly integrated with a dual broad-wall coupler, offering efficient power combination from two RF sources. A Magic Tee governs the phase and amplitude of incoming signals, ensuring seamless and interference-free signal merging. For added signal reliability and source failure backup, a loaded port with high-power termination is included. The assembly's dual broad-wall coupler serves dual roles, allowing them to sample input signals or monitor output power, enabling precise adjustments to meet diverse application requirements. Additionally, right-angle adapters at the input ports simplify transitions to the SMA(m) interface, while a dedicated bulkhead facilitates connection to the output WRD500 interface. The WRD500 stands out with its impressive high matching level and minimal insertion loss, making it the preferred choice for applications that demand both enhanced signal strength and optimal efficiency within the specified frequency range.

Electrical Specifications

Frequency	: 6.00 – 18.00 GHz
VSWR - Input	: 2.00: 1
VSWR - Output	: 2.00: 1
Insertion Loss	: 1.5 dB
Isolation	: 12.0 dB
Power Handling – Average	: 200 W CW

Contact Info :

Address:
5790 rue Donahue,
St-Laurent, QC
Canada, H4S 1C1

Phone:
(+1) 514-664-5790

Website:
www.smcq.com

email:
info@smcq.com

Mechanical Specifications

Waveguide Size	: WRD 500
Interface – Input Ports	: SMA(m)
Interface – Output Port	: Square Cover
Material	: Aluminum 6061
Finish	: Silver
Paint	: Black



WRD500 2-Way Combining System Assembly Typical Measured Results

