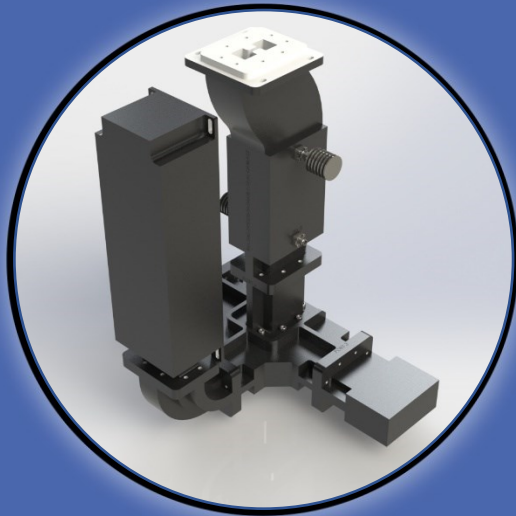


WRD250 Power Combining System Assembly



Description

The WRD250 power combining assembly consists of a 2-way combiner integrated with a dual broad-wall coupler. It efficiently combines power from two RF sources using a Magic Tee that governs the phase and amplitude of incoming signals, allowing for seamless and interference-free signal merging. Loaded ports with high power termination enhance signal reliability, offering backup functionality in case of source failure. The dual broad-wall couplers embedded in the assembly can either sample input signals or monitor output power, facilitating precise adjustments as required by various applications. Moreover, the use of right-angle adapters at the input ports simplifies transitions to the 7/16(f) interface, while a dedicated bulkhead facilitates connection to the output WRD250 interface. The WRD250 excels with its impressive high matching level and minimal insertion loss, making it the ideal choice for applications demanding both enhanced signal strength and optimal efficiency within the specified frequency range.

Electrical Specifications

Frequency	: 2.50 – 7.50 GHz
VSWR - Input	: 2.00: 1
Insertion Loss	: 0.75 dB
Isolation	: 12.0 dB
Nominal Coupling – Forward	: 30.0 dB ± 2.0 dB
Nominal Coupling – Reverse	: 30.0 dB ± 2.0 dB
Directivity	: > 15.0 dB
Power Handling – Average	: 1.5 kW CW

Mechanical Specifications

Waveguide Size	: WRD 250
Interface – Input Ports	: 7/16(f)
Interface – Output Port	: Rectangular Cover
Material	: Aluminum 6061
Finish	: Silver
Paint	: Black

Contact Info :

Address:
5790 rue Donahue,
St-Laurent, QC
Canada, H4S 1C1

Phone:
(+1) 514-664-5790

Website:
www.smcq.com

email:
info@smcq.com



WRD250 Power Combining System Assembly Typical Measured Results

