

Double Ridge Waveguide

Magic Tee

Description

We are proud to provide a wide range of double ridge waveguide magic tee covering bands from 1 GHz to 40 GHz. Our magic tees are featured with full band operation, deep matching with high isolation in both the co-linear ports and the E- & H- ports, stable transmission throughout the operating range, and high-power handling capability.

Applications

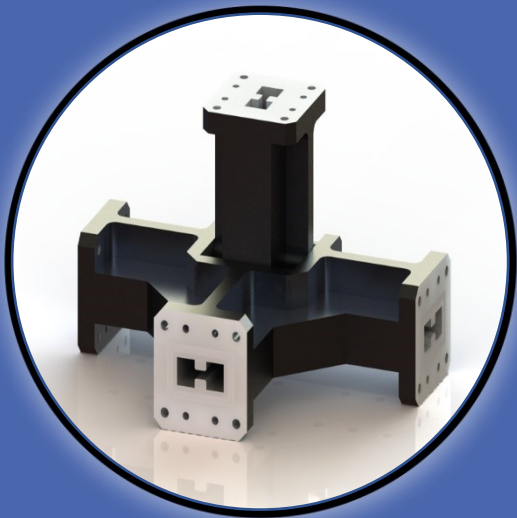
- High power combiner assembly
- Radar systems
- Satellite applications

Electrical Specifications

- Pressurized and TVAC units are available based on the client requirement.
- Partial bands magic tees are available upon request with better electrical characteristics and customized solutions.
- WRD250S/WRD600 are SMC special designed double ridge waveguide structures that cover extremely wide band 3:1.
- WRD600P is an SMC special designed double ridge waveguide structure with exceptional high power handling capability.

Mechanical Specifications

Material: Aluminum 6061 / Copper / Brass
Finish: Chromate/Plated
Paint: As per request



Contact Info :

Address:
 5790 rue Donahue,
 St-Laurent, QC
 Canada, H4S 1C1

Phone:
 (+1) 514-664-5790

Website:
www.smcq.com

email:
info@smcq.com



Electrical Specifications

Model Number	Waveguide Size	Frequency	VSWR	E-H Isolation (dB)	Co-Linear Isolation (dB)	Dimension A	Dimension B
SMC-176D840	WRD840	0.84-2.00 GHz	1.60:1	30	15	8.5	5
SMC-176D200	WRD200	2.00-4.80 GHz	1.60:1	30	15	7.5	4
SMC-176D250S*	WRD250S	2.50-7.50 GHz	1.80:1	30	14	6.5	4
SMC-176D250	WRD250	2.60-7.80 GHz	1.60:1	30	15	6	3.5
SMC-176D350	WRD350	4.00-8.00 GHz	1.60:1	25	15	4.5	2.5
SMC-176D475	WRD475	4.75-11.00 GHz	1.60:1	30	12	4	2
SMC-176D500	WRD500	6.00-18.00 GHz	1.70:1	25	12	3.5	2
SMC-176D580	WRD580	5.80-16.00 GHz	1.60:1	30	13	3	1.7
SMC-176D600P*	WRD600P	6.00-11.00 GHz	1.50:1	30	15	2.9	1.7
SMC-176D600*	WRD600	6.00-18.00 GHz	1.70:1	30	13	2.6	1.7
SMC-176D650	WRD650	6.50-18.00 GHz	1.60:1	30	13	2.5	1.7
SMC-176D750	WRD750	7.50-18.00 GHz	1.60:1	30	14	2.5	1.6
SMC-176D180	WRD180	18.00-40.0 GHz	1.80:1	30	12	1.5	1

