

# Four-way Isolated Power Combiner/Divider



## Description

We are proud to provide a wide range of rectangular waveguide four-way isolated power combiner/divider covering bands from 1 GHz to 110 GHz. Our Power combiner/dividers are featured with full band operation, high-isolation level, deep matching with stable signal transmission, and high-power handling capability.

## Applications

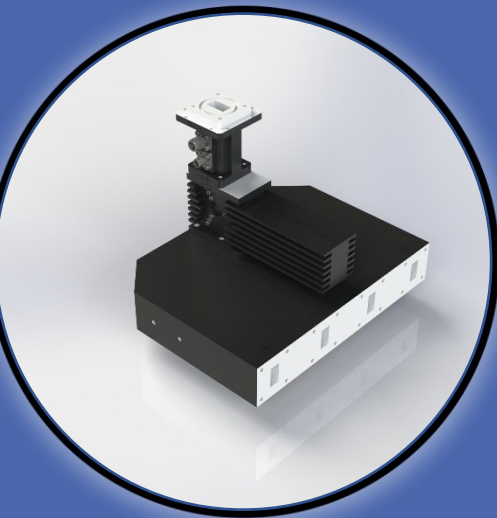
- High Power Combiner Assembly
- Radar systems
- Satellite feed applications

## Electrical Specifications

- Partial bands are available upon request with better electrical characteristics and customized solutions.
- Pressurized and TVAC units are available based on the client requirement.
- This can work as a combiner in case of in-phase inputs (for unbalanced phases use isolated power combiners).
- High power handling units are available based on the client requirement

## Mechanical Specifications

**Material:** Aluminum 6061 / Copper / Brass  
**Finish:** Chromate/Plated  
**Paint:** As per request



### Contact Info :

Address:  
5790 rue Donahue,  
St-Laurent, QC  
Canada, H4S 1C1

Phone:  
(+1) 514-664-5790

Website:  
[www.smcq.com](http://www.smcq.com)

email:  
[info@smcq.com](mailto:info@smcq.com)



## Electrical Specifications

Model Number	Waveguide Size	Frequency	VSWR Output	Transmission	Isolation
SMC-120650	WR-650	1.12-1.70 GHz	1.4:1	6±0.6	20
SMC-120510	WR-510	1.45-2.20 GHz	1.4:1	6±0.6	20
SMC-120430	WR-430	1.70-2.60 GHz	1.4:1	6±0.6	20
SMC-120340	WR-340	2.20-3.30 GHz	1.4:1	6±0.6	20
SMC-120284	WR-284	2.60-3.95 GHz	1.4:1	6±0.6	20
SMC-120229	WR-229	3.30-4.90 GHz	1.4:1	6±0.6	20
SMC-120187	WR-187	3.95-5.85 GHz	1.4:1	6±0.6	20
SMC-120159	WR-159	4.90-7.05 GHz	1.4:1	6±0.6	20
SMC-120137	WR-137	5.85-8.20 GHz	1.4:1	6±0.6	20
SMC-120112	WR-112	7.05-10.0 GHz	1.4:1	6±0.6	20
SMC-120102	WR-102	7.00-11.0 GHz	1.4:1	6±0.6	20
SMC-120090	WR-90	8.20-12.40 GHz	1.4:1	6±0.6	20
SMC-120075	WR-75	10.0-15.0 GHz	1.4:1	6±0.6	20
SMC-120062	WR-62	12.40-18.0 GHz	1.4:1	6±0.6	20
SMC-120051	WR-51	15.0-22.0 GHz	1.4:1	6±0.6	20
SMC-120042	WR-42	18.0-26.5 GHz	1.4:1	6±0.6	20
SMC-120034	WR-34	22.00 - 33.00 GHz	1.4:1	6±0.7	20
SMC-120028	WR-28	26.5-40.0 GHz	1.45:1	6±0.8	18
SMC-120022	WR-22	33.0-50.0 GHz	1.5:1	6±0.85	17
SMC-120019	WR-19	40.0-60.0 GHz	1.5:1	6±0.9	17
SMC-120015	WR-15	50.0-60.0 GHz	Upon request	Upon request	Upon request
SMC-120012	WR-12	60.0-90.0 GHz	Upon request	Upon request	Upon request
SMC-120010	WR-10	75.0-110.0 GHz	Upon request	Upon request	Upon request