

Rectangular Waveguide Duplexer

Description

We are proud to provide a wide range of rectangular waveguide duplexers covering the bands from 1 GHz to 110 GHz. Our duplexers are featured with full band operation, deep matching with high isolation between the transmit and the received ports, low insertion loss, and high-power handling capability.

Applications

- Full duplex antenna systems
- Radar systems
- Satellite applications

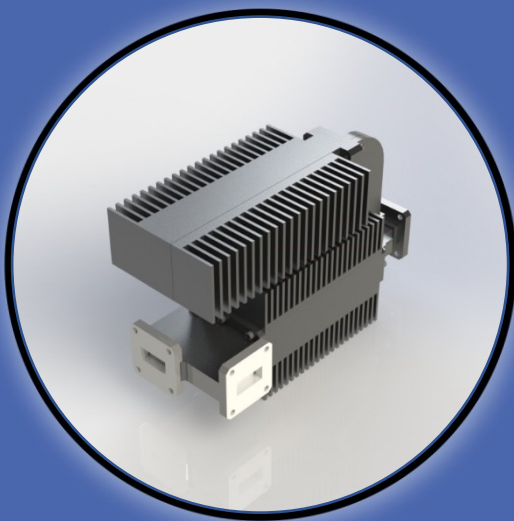
Electrical Specifications

The frequency band as well as the matching level depend on the standard as illustrated in the table attached.

- Partial bands are available upon request with better electrical characteristics and/or more compact size.
- Exact bandwidth is determined upon the client request.
- Pressurized and TVAC units are available based on the client requirement.

Mechanical Specifications

Material: Aluminum 6061 / Copper / Brass
Finish: Chromate/Plated
Paint: As per request



Contact Info :

Address:
5790 rue Donahue,
St-Laurent, QC
Canada, H4S 1C1

Phone:
(+1) 514-664-5790

Website:
www.smcq.com

email:
info@smcq.com



Electrical Specifications

Model Number	Waveguide Size	Frequency	BW%	IL	RL	Isolation	Dimension L (inch)
SMC-024650	WR-650	1.12-1.70 GHz	25	0.2	23	23	140
SMC-024510	WR-510	1.45-2.20 GHz	25	0.2	23	23	110
SMC-024430	WR-430	1.70-2.60 GHz	25	0.2	23	23	95
SMC-024340	WR-340	2.20-3.30 GHz	25	0.2	23	23	75
SMC-024284	WR-284	2.60-3.95 GHz	25	0.25	23	23	65
SMC-024229	WR-229	3.30-4.90 GHz	25	0.25	23	23	50
SMC-024187	WR-187	3.95-5.85 GHz	25	0.25	23	23	40
SMC-024159	WR-159	4.90-7.05 GHz	25	0.25	20	20	35
SMC-024137	WR-137	5.85-8.20 GHz	25	0.25	20	20	30
SMC-024112	WR-112	7.05-10.0 GHz	25	0.25	20	20	25
SMC-024102	WR-102	7.00-11.0 GHz	25	0.3	20	20	20
SMC-024090	WR-90	8.20-12.40 GHz	25	0.3	20	20	15
SMC-024075	WR-75	10.0-15.0 GHz	25	0.3	20	20	15
SMC-024062	WR-62	12.40-18.0 GHz	25	0.3	20	20	10
SMC-024051	WR-51	15.0-22.0 GHz	25	0.4	20	20	10
SMC-024042	WR-42	18.0-26.5 GHz	25	0.4	20	20	10
SMC-024034	WR-34	22.00 - 33.00 GHz	25	0.6	20	20	6
SMC-024028	WR-28	26.5-40.0 GHz	15	0.7	17	17	6
SMC-024022	WR-22	33.0-50.0 GHz	15	0.7	17	17	6
SMC-024019	WR-19	40.0-60.0 GHz	10	0.75	15	15	5
SMC-024015	WR-15	50.0-60.0 GHz	upon request	upon request	upon request	upon request	3
SMC-024012	WR-12	60.0-90.0 GHz	upon request	upon request	upon request	upon request	3
SMC-024010	WR-10	75.0-110.0 GHz	upon request	upon request	upon request	upon request	3

