

Rectangular Waveguide Single Loop Coupler

Description

We are proud to provide a wide range of rectangular waveguide single loop coupler with coaxial coupled ports covering bands from 1 GHz to 110 GHz. Our single loop couplers are featured with full band operation, deep matching, stable coupling level, high-directivity, and high-power handling capability.

Applications

- High power combiner assembly
- RF Source Protection
- Satellite applications

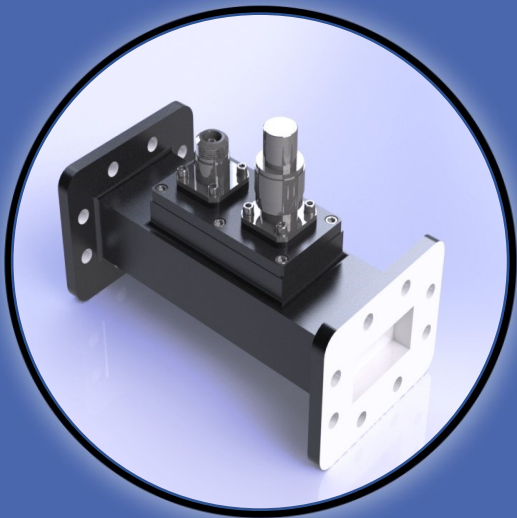
Electrical Specifications

The frequency band as well as the matching level depend on the standard as detailed in the table attached.

- Different male or female coaxial connectors are available Upon request (TNC, SC, 2.4 mm, 3.5 mm, 1.85 mm)
- Couplers can be provided with 30,40,50,60 dB coupling.
- Directivity and Coupling sensitivity can be enhanced for partial band operation.
- Pressurized and TVAC units are available based on the client requirement.

Mechanical Specifications

Material: Aluminum 6061 / Copper / Brass
Finish: Chromate/Plated
Paint: As per request



Contact Info :

Address:
5790 rue Donahue,
St-Laurent, QC
Canada, H4S 1C1

Phone:
(+1) 514-664-5790

Website:
www.smcq.com

email:
info@smcq.com



Electrical Specifications

Model Number	Waveguide Size	Frequency (GHz)	Coupling Sensitivity (\pm dB)	Directivity (dB)	Dimension L	Main Arm VSWR	Coupled Port interface
SMC-070650	WR-650	1.12-1.70	1.5	15	≥ 10	1.2:1	N(f)
SMC-070510	WR-510	1.45-2.20	1.5	15	≥ 9	1.2:1	N(f)
SMC-070430	WR-430	1.70-2.60	1.5	15	≥ 8	1.2:1	N(f)
SMC-070340	WR-340	2.20-3.30	1.5	15	≥ 7	1.2:1	N(f)
SMC-070284	WR-284	2.60-3.95	1.5	15	≥ 6	1.2:1	N(f)
SMC-070229	WR-229	3.30-4.90	1.5	15	≥ 5	1.2:1	N(f)
SMC-070187	WR-187	3.95-5.85	1.5	15	≥ 4.5	1.2:1	N(f)
SMC-070159	WR-159	4.90-7.05	1.5	15	≥ 4	1.2:1	N(f)
SMC-070137	WR-137	5.85-8.20	1.5	15	≥ 3.5	1.2:1	N(f)
SMC-070112	WR-112	7.05-10.0	1.5	15	≥ 3	1.2:1	SMA(f)
SMC-070102	WR-102	7.00-11.0	1.5	15	≥ 3	1.2:1	SMA(f)
SMC-070090	WR-90	8.20-12.40	1.5	15	≥ 3	1.2:1	SMA(f)
SMC-070075	WR-75	10.0-15.0	1.5	15	≥ 2.5	1.2:1	SMA(f)
SMC-070062	WR-62	12.4-18.0	1.5	15	≥ 2.5	1.2:1	SMA(f)
SMC-070051	WR-51	15.0-22.0	1.5	15	≥ 2.5	1.2:1	SMA(f)
SMC-070042	WR-42	18.0-26.5	1.5	15	≥ 2.5	1.2:1	K(f)
SMC-070034	WR-34	22.0 – 33.0	1.5	15	≥ 2	1.2:1	K(f)
SMC-070028	WR-28	26.5-40.0	1.5	15	≥ 2	1.2:1	K(f)
SMC-070022	WR-22	33.0-50.0	1.5	15	≥ 2	1.2:1	2.4 mm (f)
SMC-070019	WR-19	40.0-60.0	1.5	15	≥ 2	1.2:1	1.85 mm (f)
SMC-070015	WR-15	50.0-75.0	Upon request	Upon request	≥ 1.5	Upon request	1.85 mm (f)
SMC-070012	WR-12	60.0-90.0	Upon request	Upon request	≥ 1.5	Upon request	1 mm (f)
SMC-070010	WR-10	75.0-110	Upon request	Upon request	≥ 1.5	Upon request	1 mm (f)

