

Rectangular Waveguide Isolators



Description

We are proud to provide a wide range of rectangular waveguide isolators covering bands from 1 GHz to 110 GHz. Our isolators are featured with full band operation, deep matching and isolation levels, low insertion loss and high-power handling capability.

Applications

- RF Source Protection
- Radar systems
- Satellite applications

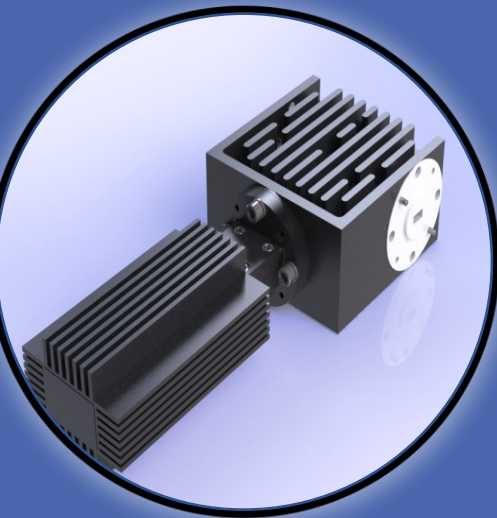
Electrical Specifications

The frequency band as well as the matching level depend on the standard as detailed in the table attached.

- Partial band isolators are available upon request with better electrical characteristics and customized solutions.
- Pressurized and TVAC units are available based on the client's requirement.
- High power units are available upon request.

Mechanical Specifications

Material: Aluminum 6061 / Copper / Brass
Finish: Chromate/Plated
Paint: As per request



Contact Info :

Address:
5790 rue Donahue,
St-Laurent, QC
Canada, H4S 1C1

Phone:
(+1) 514-664-5790

Website:
www.smcq.com

email:
info@smcq.com



Electrical Specifications

Model Number	Waveguide Size	Frequency Range	IL	RL	Isolation	A	B	C	D
SMC-021650	WR-650	1.12-1.70 GHz	0.3	18	18	20	20	5.44	9.655
SMC-021510	WR-510	1.45-2.20 GHz	0.3	20	20	15	15	4.19	5.8
SMC-021430	WR-430	1.70-2.60 GHz	0.3	20	20	15	15	3	4.25
SMC-021340	WR-340	2.20-3.30 GHz	0.3	18	18	13	13	3.75	4.78
SMC-021284	WR-284	2.60-3.95 GHz	0.3	18	18	12	12	2.75	3.06
SMC-021229	WR-229	3.30-4.90 GHz	0.3	18	18	12	12	2.5	2.75
SMC-021187	WR-187	3.95-5.85 GHz	0.3	20	20	8	8	2.44	2.405
SMC-021159	WR-159	4.90-7.05 GHz	0.3	20	20	6	6	1.94	1.905
SMC-021137	WR-137	5.85-8.20 GHz	0.3	20	20	6	6	1.88	1.56
SMC-0210112	WR-112	7.05-10.0 GHz	0.3	20	20	5	5	1.63	1.453
SMC-0210102	WR-102	7.00-11.0 GHz	0.3	20	20	5	5	1.5	1.25
SMC-021090	WR-90	8.20-12.40 GHz	0.3	20	20	4.5	4.5	1.31	1.095
SMC-021075	WR-75	10.0-15.0 GHz	0.3	20	20	4	4	1.31	0.845
SMC-021062	WR-62	12.40-18.0 GHz	0.3	18	18	4	4	0.88	0.81
SMC-021051	WR-51	15.0-22.0 GHz	0.3	18	18	3.5	3.5	0.88	0.625
SMC-021042	WR-42	18.0-26.5 GHz	0.4	15	15	3	3	0.75	0.56
SMC-021034	WR-34	22.0-33.0 GHz	0.4	15	15	2.5	2.5	0.75	0.375
SMC-021028	WR-28	26.5-40.0 GHz	0.4	15	14	2.5	2.5	0.75	0.375
SMC-021022	WR-22	33.0-50.0 GHz	Upon request	Upon request	Upon request	Upon request	Upon request	Upon request	Upon request
SMC-021019	WR-19	40.0-60.0 GHz	Upon request	Upon request	Upon request	Upon request	Upon request	Upon request	Upon request
SMC-021015	WR-15	50.0-60.0 GHz	Upon request	Upon request	Upon request	Upon request	Upon request	Upon request	Upon request
SMC-021012	WR-12	60.0-90.0 GHz	Upon request	Upon request	Upon request	Upon request	Upon request	Upon request	Upon request
SMC-021010	WR-10	75.0-110.0 GHz	Upon request	Upon request	Upon request	Upon request	Upon request	Upon request	Upon request

