

# Rectangular Waveguide Circulators

## Description

We are proud to provide a wide range of rectangular waveguide circulators covering bands from 1 GHz to 110 GHz. Our circulators are featured with full band operation, deep matching and isolation levels, low insertion loss and high-power handling capability.

## Applications

- RF source protection
- Radar systems
- Satellite applications

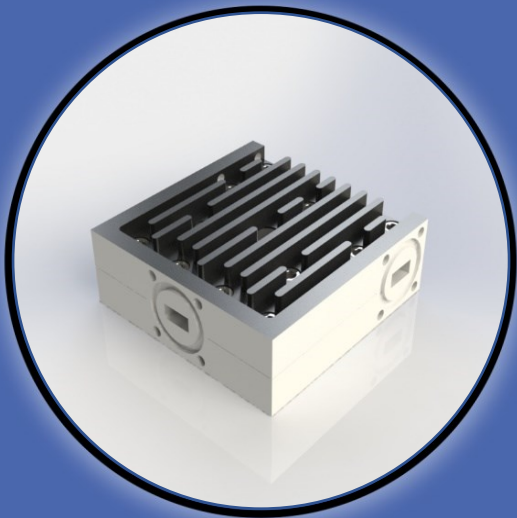
## Electrical Specifications

The frequency band as well as the matching level depend on the standard as detailed in the table attached.

- Partial band circulators are available upon request with better electrical characteristics and customized solutions.
- Pressurized and TVAC units are available based on the client's requirement.
- High power units are available upon request.

## Mechanical Specifications

**Material:** Aluminum 6061 / Copper / Brass  
**Finish:** Chromate/Plated  
**Paint:** As per request



### Contact Info :

Address:  
5790 rue Donahue,  
St-Laurent, QC  
Canada, H4S 1C1

Phone:  
(+1) 514-664-5790

Website:  
[www.smcq.com](http://www.smcq.com)

email:  
[info@smcq.com](mailto:info@smcq.com)



## Electrical Specifications

Model Number	Waveguide Size	Frequency Range	IL	RL	Isolation	A	B	C	D
SMC-020650	WR-650	1.12-1.70 GHz	0.3	18	18	20	20	5.44	9.655
SMC-020510	WR-510	1.45-2.20 GHz	0.3	20	20	15	15	4.19	5.8
SMC-020430	WR-430	1.70-2.60 GHz	0.3	20	20	15	15	3	4.25
SMC-020340	WR-340	2.20-3.30 GHz	0.3	18	18	13	13	3.75	4.78
SMC-020284	WR-284	2.60-3.95 GHz	0.3	18	18	12	12	2.75	3.06
SMC-020229	WR-229	3.30-4.90 GHz	0.3	18	18	12	12	2.5	2.75
SMC-020187	WR-187	3.95-5.85 GHz	0.3	20	20	8	8	2.44	2.405
SMC-020159	WR-159	4.90-7.05 GHz	0.3	20	20	6	6	1.94	1.905
SMC-020137	WR-137	5.85-8.20 GHz	0.3	20	20	6	6	1.88	1.56
SMC-0200112	WR-112	7.05-10.0 GHz	0.3	20	20	5	5	1.63	1.453
SMC-0200102	WR-102	7.00-11.0 GHz	0.3	20	20	5	5	1.5	1.25
SMC-020090	WR-90	8.20-12.40 GHz	0.3	20	20	4.5	4.5	1.31	1.095
SMC-020075	WR-75	10.0-15.0 GHz	0.3	20	20	4	4	1.31	0.845
SMC-020062	WR-62	12.40-18.0 GHz	0.3	18	18	4	4	0.88	0.81
SMC-020051	WR-51	15.0-22.0 GHz	0.3	18	18	3.5	3.5	0.88	0.625
SMC-020042	WR-42	18.0-26.5 GHz	0.4	15	15	3	3	0.75	0.56
SMC-020034	WR-34	22.0-33.0 GHz	0.4	15	15	2.5	2.5	0.75	0.375
SMC-020028	WR-28	26.5-40.0 GHz	0.4	15	14	2.5	2.5	0.75	0.375
SMC-020022	WR-22	33.0-50.0 GHz	Upon request	Upon request	Upon request	Upon request	Upon request	Upon request	Upon request
SMC-020019	WR-19	40.0-60.0 GHz	Upon request	Upon request	Upon request	Upon request	Upon request	Upon request	Upon request
SMC-020015	WR-15	50.0-60.0 GHz	Upon request	Upon request	Upon request	Upon request	Upon request	Upon request	Upon request
SMC-020012	WR-12	60.0-90.0 GHz	Upon request	Upon request	Upon request	Upon request	Upon request	Upon request	Upon request
SMC-020010	WR-10	75.0-110.0 GHz	Upon request	Upon request	Upon request	Upon request	Upon request	Upon request	Upon request

